

## Sligo Mobility Project

7 Beulah Building,  
Finisklin Road,  
County Sligo,  
F91 A0H9

T +353 71 913 8909



Date: 26<sup>th</sup> July 2021

Sligo County Council, Community & Economic Development  
City Hall  
Quay Street  
Sligo  
Ireland  
F91 PP44

Dear Sir / Madam

### Re: Sligo Mobility Project (Mobility Management Plan)

The IDA have engaged RPS Consulting Engineers to develop a Mobility Management Plan (also known as a Workplace Travel Plan) for the *IDA Sligo Business Park, Finisklin* and the *IDA Sligo Business and Technology Park, Finisklin* as shown in Figure 1 overleaf.

A Mobility Management Plan is a package of actions used to promote and support sustainable travel among employees to their places of work. Sustainable transport modes include, but are not limited to, walking, cycling, carpooling, car clubs, public transport and electric vehicles.

Currently, RPS are conducting stakeholder consultations to assist in the development of the Mobility Management Plan. To help ensure this plan is shaped at an early stage by the relevant stakeholders, we would greatly appreciate any comments you may have in relation to transport options serving the Finisklin area of Sligo. We would also be interested in how you think the current pandemic will impact on commuter trends in the future.

Please forward your correspondence to the undersigned at RPS, 7 Beulah Building, Finisklin Road County Sligo, F91 A0H9, Ireland or [peter.dickson@rpsgroup.com](mailto:peter.dickson@rpsgroup.com) by the 11<sup>th</sup> August 2021.

Thank you for your interest and we look forward to hearing from you.

Yours sincerely,  
for RPS Consulting Engineers

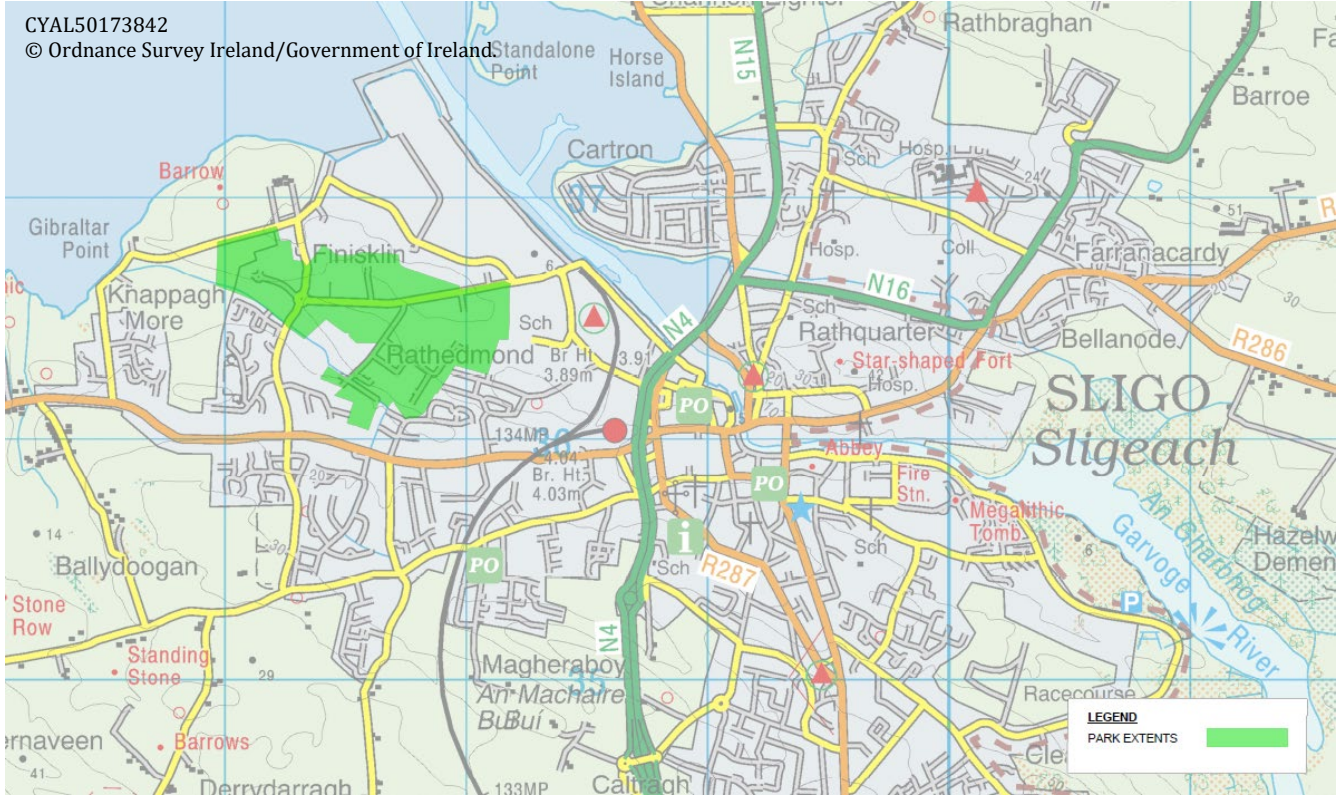
**Peter Dickson**  
[peter.dickson@rpsgroup.com](mailto:peter.dickson@rpsgroup.com)  
+353 71 913 8909



**Sligo Mobility Project**

7 Beulah Building,  
Finisklin Road,  
County Sligo,  
F91 A0H9

T +353 71 913 8909



**Figure 1 – IDA Park Locations**

